



SANDRA MERCURI
EDUCATIONAL CONSULTANTS

Accelerating Multilingual Learner's Biliteracy Development Through Cross Linguistic Connections



Sandra Mercuri, Ph.D.

SMEC CEO

✉ sandrapmercuri@gmail.com

✕ @DrSMercuri

📷 [sandrapmercuri](https://www.instagram.com/sandrapmercuri)



Vivian Pratts, Ed.D.

Ex. Dir. Professional Development

✉ Lvpratts@outlook.com

✕ [@vivianrpratts1](https://www.instagram.com/vivianrpratts1)

📷 [vivian.pratts](https://www.instagram.com/vivian.pratts)

Translanguaging

From a socio-cultural perspective is a normal, empowering, communicative practice that bilinguals use to make sense of their world.

Translanguaging pedagogies

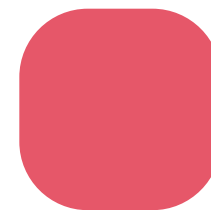
- Interdisciplinary Planning: CLLIF
- Preview-View-Review
- Cross-Linguistic Connections (CLC)



WHAT IS NOT A CROSS-LINGUISTIC CONNECTION

- More than one pattern
- Incorrectly identified pattern
- Frontloading of vocabulary
- Not evaluative or assessment

**Non-examples
Never, ever, ever**

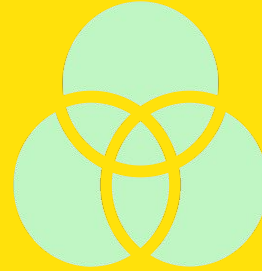


Metacognition and Language Use



What we do: Metacognitive strategies

For example,
visualization,
text-to-text and
text-to-self
connections.



Additionally, we should engage emergent bilinguals in Metalanguage

Thinking and talking
about the two
program languages.



How?

Contrastive Analysis

Involve students in
finding similarities
and differences of all
aspects: phonology,
morphology,
grammar and syntax.

Metalinguistic Awareness

What is a CROSS LINGUISTIC CONNECTION?

- ❑ engage students in talking about both languages side by side
- ❑ guide students in noticing similarities and differences in English and Spanish's **morphology, phonology, grammar and syntax**
- ❑ allow bilingual learners to connect, access and apply concepts and skills from English to Spanish and from Spanish to English
- ❑ facilitate students' development of **metalanguage**
- ❑ linguistic awareness and ultimately biliteracy



LEVELS OF LANGUAGE ADDRESSED THROUGH METALINGUISTIC CONVERSATIONS

Phonology

The study of the patterns of sounds in a language and across languages.

Morphology

The study of the meaningful parts of words, such as prefixes and suffixes.

Grammar

The study of the entire system and structure of a language.

Syntax

Refers to the internal structure of sentences in a language.

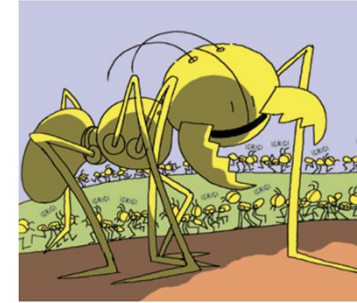
KILLER ANTS/HORMIGAS ASESINAS

- **RF.2.3f** Recognize and read grade-appropriate irregularly spelled words.
- **LF.2.3f** Reconocer y leer al nivel de grado, palabras con ortografía relativamente compleja con h, que es siempre muda excepto con el dígrafo ch.

Explain to students what they are going to learn:

“Today we are going to learn about the sound that the letter “h” makes in English and Spanish”

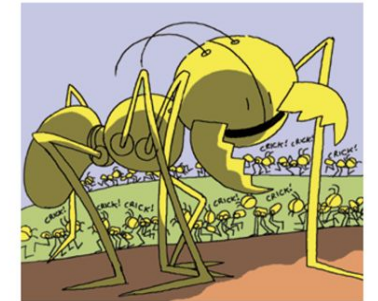
Hormigas asesinas



Escrito por Anna Porter
Ilustrado por Alex Stitt



Killer Ants



Written by Anna Porter
Illustrated by Alex Stitt



SANDRA MERCURI
EDUCATIONAL CONSULTANTS

Guiding Questions for Metalinguistic Conversations

What do you notice about _____ in English?

What do you notice about _____ in Spanish?

What do you notice about _____ in English and Spanish?



Similarities & Differences



Cross-Linguistic Connection handout created by
Sandra Mercuri Educational Consultants.
All rights reserved.



SANDRA MERCURI
EDUCATIONAL CONSULTANTS